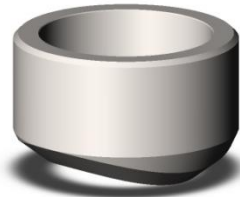


ISO 9001 & PED Certified
Canadian Registered in all provinces

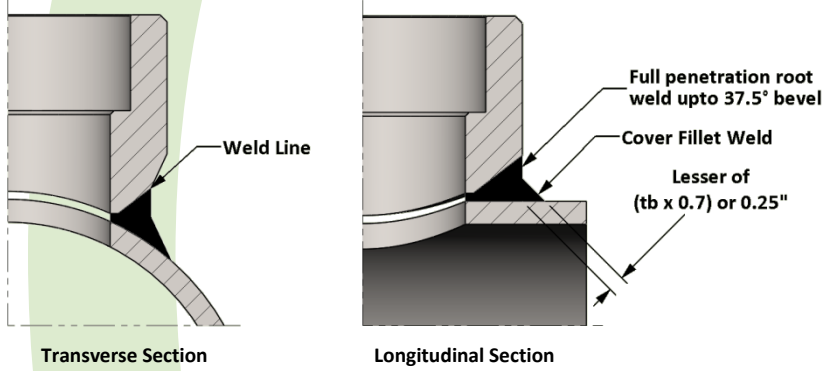


Specification: ASME B31.1 & MSS-SP97
Also in ASME B31.3 and ASME BPVC Sec 1 & Sec 8 Div 2

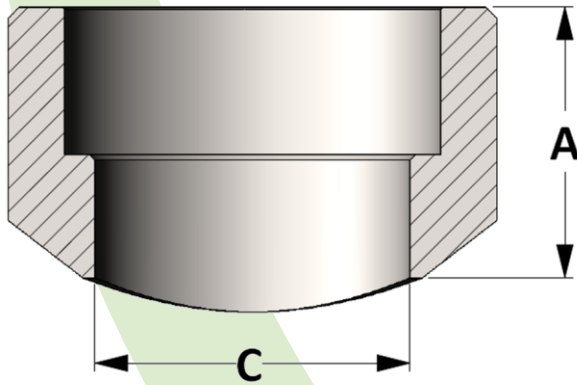
Material: Available in a complete range of Carbon Steels, Stainless Steels, Alloy Steels and Non-ferrous metals certified to ASTM, ASME, and Military standards.

Sizes: 1/8" - 6" in Class 3000 and 6000
1/2" - 4" in class 9000

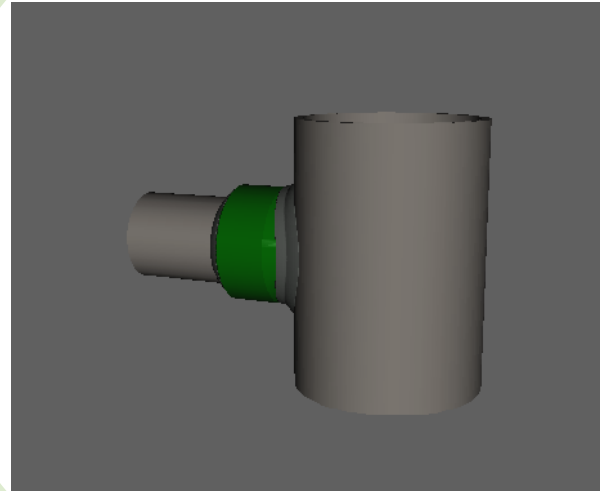
Welding onto Header Pipe



Socket Weld Pressure Class	Pipe Schedule
Class 3000	S80/XH
Class 6000	S160
Class 9000	XXH



Active
3D
Model



All dimensions are in inches • Weights are based on Carbon Steel

PIPE SIZE	CLASS 3000 – Figure No. 13502												
	1/8	1/4	3/8	1/2	3/4	1	1-1/4	1-1/2	2	2-1/2	3	3-1/2	4
A	0.750	0.750	0.813	1.000	1.063	1.313	1.313	1.375	1.500	1.813	2.000	2.125	2.250
C	0.269	0.364	0.493	0.622	0.824	1.049	1.380	1.610	2.067	2.469	3.068	3.548	4.026
LBS	0.07	0.12	0.16	0.27	0.36	0.59	0.84	1.00	1.53	2.66	3.72	4.40	7.05

PIPE SIZE	CLASS 6000 – Figure No. 16502												
	1/8	1/4	3/8	1/2	3/4	1	1-1/4	1-1/2	2	2-1/2	3	3-1/2	4
A	1.125	1.125	1.125	1.250	1.438	1.563	1.625	1.688	2.063	2.688	2.688	---	3.313
C	0.157	0.250	0.359	0.464	0.612	0.815	1.160	1.338	1.687	2.125	2.624	---	3.438
LBS	0.15	0.30	0.30	0.48	0.81	1.30	1.54	1.97	5.01	6.19	7.36	---	14.02

PIPE SIZE	CLASS 9000 – Figure No. 19502												
	1/8	1/4	3/8	1/2	3/4	1	1-1/4	1-1/2	2	2-1/2	3	3-1/2	4
A	---	---	---	1.250	1.469	1.625	1.750	1.768	2.000	2.438	2.750	---	3.313
C	---	---	---	0.252	0.434	0.599	0.896	1.100	1.503	1.771	2.300	---	3.152
LBS	---	---	---	0.55	0.80	1.40	1.88	2.10	3.35	6.48	11.11	---	17.69