



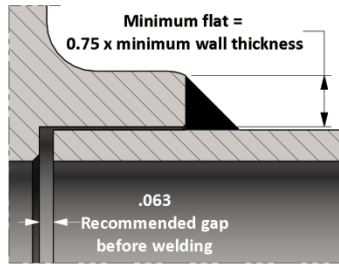
# Socket Weld Lug Nut Union

ISO 9001 & PED Certified  
Canadian Registered in all provinces

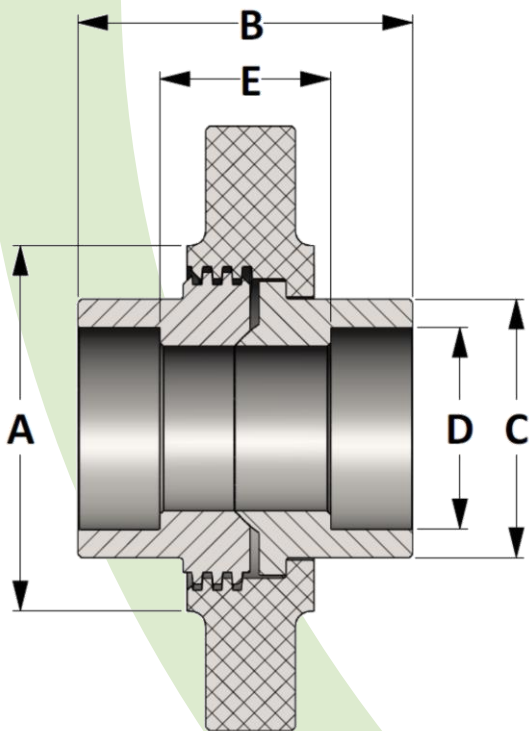
**Material:** Available in a complete range of Carbon Steels, Stainless Steels, Alloy Steels and Non-ferrous metals certified to ASTM, ASME, and Military standards.

**Sizes:** 1/2" - 3" in CL 3000 • 1/2" - 2-1/2" in CL 6000  
Also available in reducing pipe sizes and tube sizes

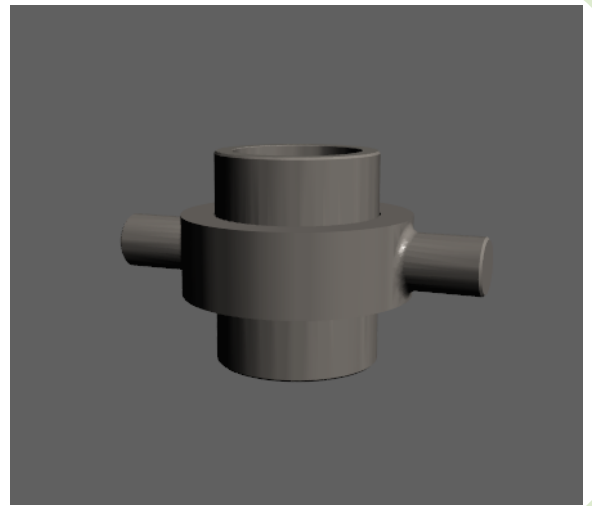
## Welding Gap and Minimum Flat Dimension for Socket Weld Fittings



Socket Weld Pressure Class	Pipe Schedule
Class 3000	S80/XH
Class 6000	S160



Active  
**3D**  
Model



All dimensions are in inches • Weights are based in Carbon Steel

CLASS 3000 – FIGURE NO. 13267

PIPE SIZE	1/2	3/4	1	1-1/4	1-1/2	2	2-1/2	3
A	1.813	2.250	2.562	3.063	3.438	4.063	4.875	5.688
B	2.006	2.318	2.506	2.818	3.068	3.443	4.006	4.318
C	1.235	1.465	1.795	2.165	2.425	2.965	3.615	4.305
D	0.859	1.071	1.335	1.682	1.922	2.410	2.910	3.536
E	0.906	1.094	1.156	1.344	1.468	1.593	2.156	2.218
LBS	0.96	1.61	2.17	3.33	4.36	7.22	12.57	17.12

CLASS 6000 – FIGURE NO. 16267

PIPE SIZE	1/2	3/4	1	1-1/4	1-1/2	2	2-1/2	3
A	2.250	2.562	3.063	3.438	4.063	4.875	5.688	---
B	2.318	2.506	2.818	3.068	3.443	4.006	4.318	---
C	1.465	1.795	2.165	2.425	2.965	3.615	4.305	---
D	0.859	1.071	1.335	1.682	1.922	2.410	2.910	---
E	1.094	1.156	1.344	1.468	1.593	2.156	2.218	---
LBS	1.80	2.52	3.95	5.00	8.83	14.65	21.19	---