

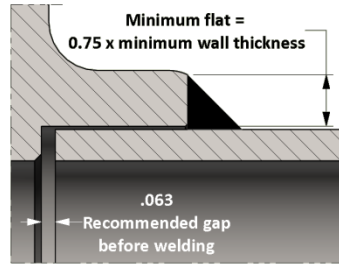


Socket Weld Lateral

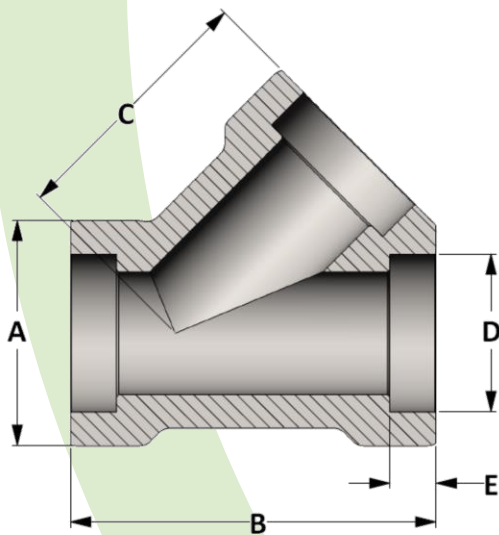
Material: Available in a complete range of Carbon Steels, Stainless Steels, Alloy Steels and Non-ferrous metals certified to ASTM, ASME, and Military standards.

Sizes: 1/8" - 3" in Class 3000 & 1/8"-2-1/2 in 6000 • 1/2"- 2" in Class 9000
Also available in CL 10,000 and reducing pipe sizes and tube sizes

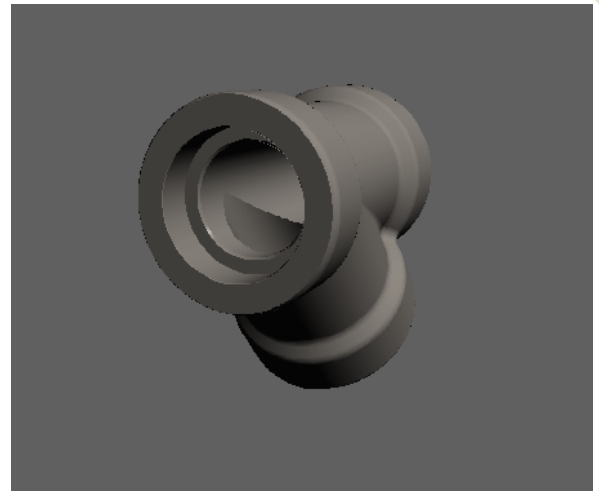
Welding Gap and Minimum Flat Dimension For Socket Weld Fittings



Socket Weld Pressure Class	Pipe Schedule
Class 3000	S80/XH
Class 6000	S160
Class 9000	XXH



Active
3D
Model



All dimensions are in inches • Weights are based on Carbon Steel

CLASS 3000 – Figure No. 13006

PIPE SIZE	1/8	1/4	3/8	1/2	3/4	1	1-1/4	1-1/2	2	2-1/2	3
A	1.500	1.500	1.500	1.500	1.750	2.000	2.438	2.750	3.313	4.000	4.625
B	2.469	2.469	2.469	2.469	2.969	3.469	3.969	4.469	5.969	7.469	11.063
C	1.750	1.750	1.750	1.750	2.125	2.500	2.813	3.188	4.375	5.313	8.563
D	0.426	0.560	0.693	0.859	1.071	1.335	1.682	1.922	2.410	2.910	3.536
E	0.468	0.468	0.468	0.468	0.593	0.593	0.593	0.593	0.718	0.718	1.125
LBS	1.30	1.21	1.09	0.94	1.47	2.23	3.31	4.89	9.68	18.65	41.55

CLASS 6000 – Figure No. 16006

PIPE SIZE	1/8	1/4	3/8	1/2	3/4	1	1-1/4	1-1/2	2	2-1/2
A	1.500	1.500	1.500	1.500	1.750	2.000	2.438	2.750	3.313	4.000
B	2.469	2.469	2.469	2.469	2.969	3.469	3.969	4.469	5.969	7.469
C	1.750	1.750	1.750	1.750	2.125	2.500	2.813	3.188	4.375	5.313
D	0.426	0.560	0.693	0.859	1.071	1.335	1.682	1.922	2.410	2.910
E	0.468	0.468	0.468	0.468	0.593	0.593	0.593	0.593	0.718	0.718
LBS	1.32	1.26	1.17	1.04	1.66	2.70	3.84	5.57	11.63	21.86

CLASS 9000 – Figure No. 19006

PIPE SIZE	1/8	1/4	3/8	1/2	3/4	1	1-1/4	1-1/2	2	2-1/2
A	---	---	---	1.750	2.000	2.438	2.750	3.313	4.000	---
B	---	---	---	2.969	3.469	3.969	4.469	5.969	7.469	---
C	---	---	---	2.125	2.500	2.813	3.188	4.375	5.313	---
D	---	---	---	0.859	1.071	1.335	1.682	1.922	2.410	---
E	---	---	---	0.468	0.593	0.593	0.593	0.593	0.718	---
LBS	---	---	---	2.17	3.34	4.91	7.25	15.63	27.93	---