



Male x Female Union 90° Elbow

Material: Available in a complete range of Carbon Steels, Stainless Steels, Alloy Steels and Non-ferrous metals certified to ASTM, ASME, and Military standards.

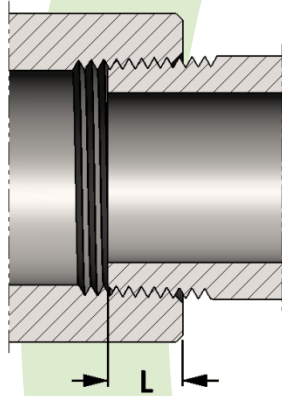
Sizes: 1/8" - 3" in CL 3000

Also available in CL 2000, CL 6000, CL 9000 and CL 10,000 and in reducing pipe sizes.

Threads: American National Standard Taper Pipe Threads NPT (ANSI/ASME B1.20.1-1983)

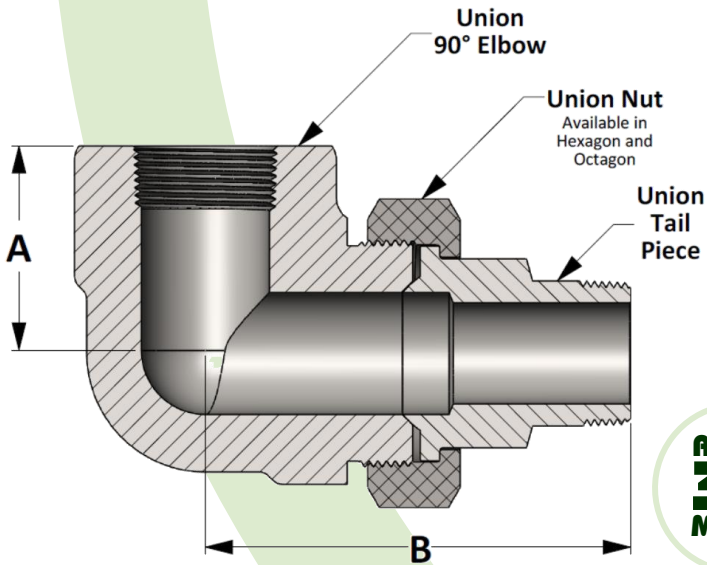
Also available in other thread forms: NPTF, NPSC, NPSM, NGT, SAE, BSPT, BSPP and in any combination. Left hand threads available upon request.

Also available in Socket Weld and in a combination of Threaded and Socket Weld

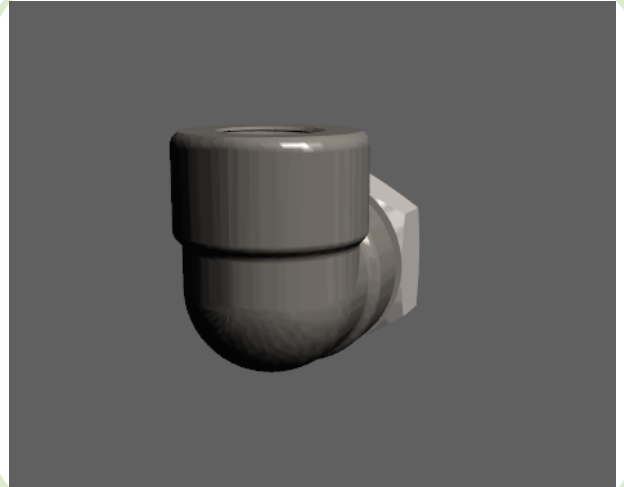


SIZE	L	SIZE	L
1/8	0.273	2	0.697
1/4	0.395	2-1/2	0.933
3/8	0.407	3	1.016
1/2	0.534	3-1/2	1.071
3/4	0.553	4	1.094
1	0.661	5	1.187
1-1/4	0.681	6	1.208
1-1/2	0.681	8	1.313

**Length of thread
screwed into fitting**



Active
3D
Model



All dimensions are in inches • Weights are based on Carbon Steel

Class 3000 - Figure No. 03058											
PIPE SIZE	1/8	1/4	3/8	1/2	3/4	1	1-1/4	1-1/2	2	2-1/2	3
A	1.125	1.125	1.125	1.313	1.500	1.750	2.375	2.375	3.000	3.750	4.188
B	2.625	2.625	2.875	3.218	3.563	4.093	4.875	4.968	6.000	6.688	7.843
LBS	0.96	0.94	0.98	1.30	1.90	3.00	3.88	6.63	8.13	22.50	27.20