



Flush Bushing

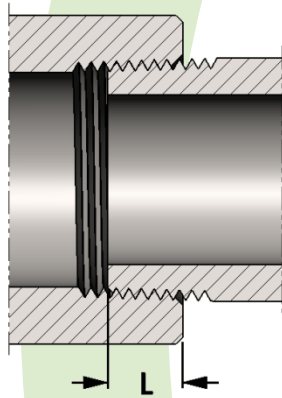
Specification: ASME B16.11 for 1/8" - 4" only

Material: Available in a complete range of Carbon Steels, Stainless Steels, Alloy Steels and Non-ferrous metals certified to ASTM, ASME, and Military standards.

Sizes: 1/8" - 8"

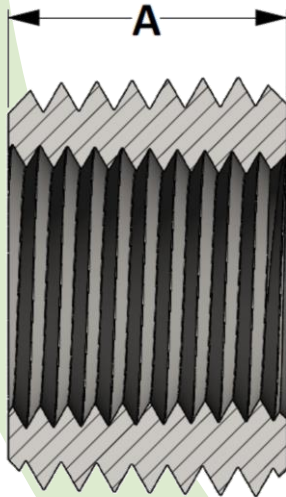
Threads: American National Standard Taper Pipe Threads
NPT (ANSI/ASME B1.20.1-1983)

Also available in other thread forms: NPTF, NPSC, NPSM, BSPT, BSPP
And in any combination

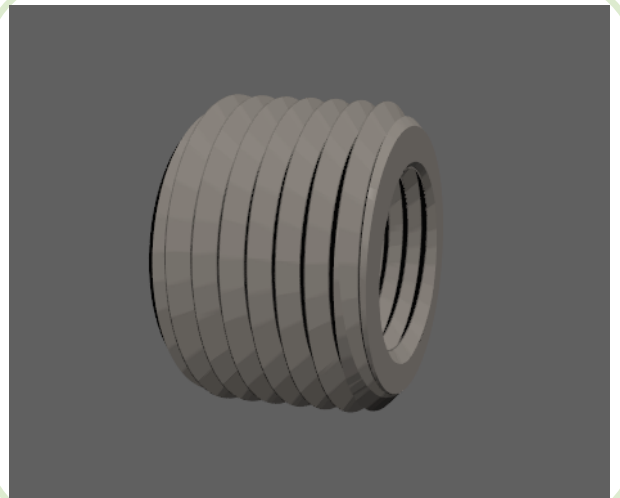


SIZE	L	SIZE	L
1/8	0.273	2	0.697
1/4	0.395	2-1/2	0.933
3/8	0.407	3	1.016
1/2	0.534	3-1/2	1.071
3/4	0.553	4	1.094
1	0.661	5	1.187
1-1/4	0.681	6	1.208
1-1/2	0.681	8	1.313

**Length of thread
screwed into fitting**



Active
3D
Model



All dimensions are in inches • Weights are based in Carbon Steel

PIPE SIZE	Figure No. 06012														
	1/8	1/4	3/8	1/2	3/4	1	1-1/4	1-1/2	2	2-1/2	3	3-1/2	4	5	6
A	---	0.438	0.500	0.563	0.625	0.750	0.813	0.813	0.875	1.063	1.125	1.188	1.250	1.250	1.375
LBS	---	0.01	0.02	0.03	0.05	0.09	0.17	0.31	0.37	0.52	0.90	0.92	2.125	2.41	4.60