

# Combination Couplet

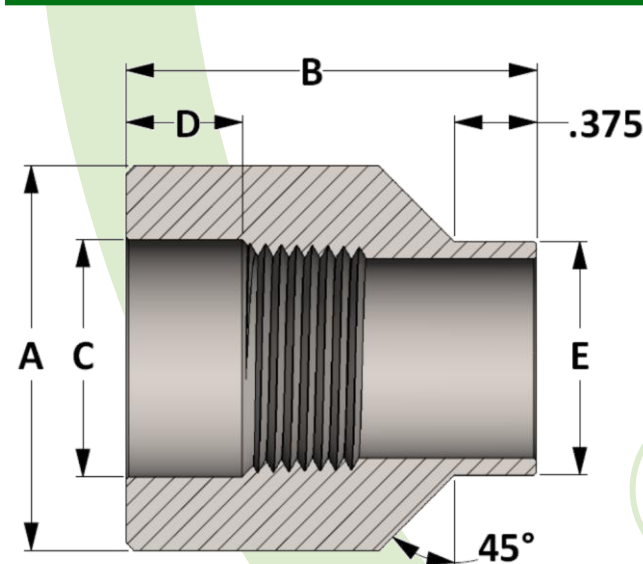
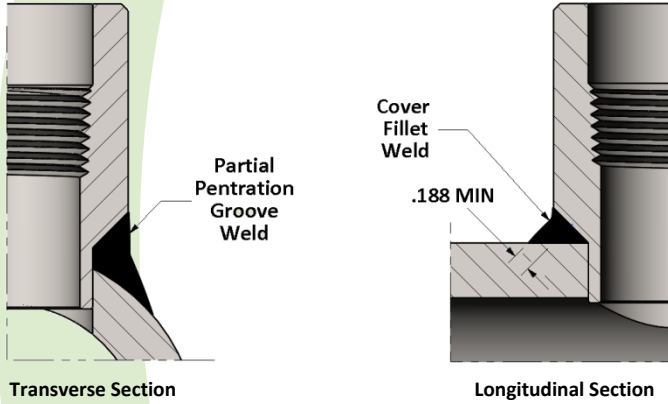
ISO 9001 & PED Certified  
Canadian Registered in all provinces

**Specification:** ASME B31.1 & ASME BPVC Sec 8 Div 1

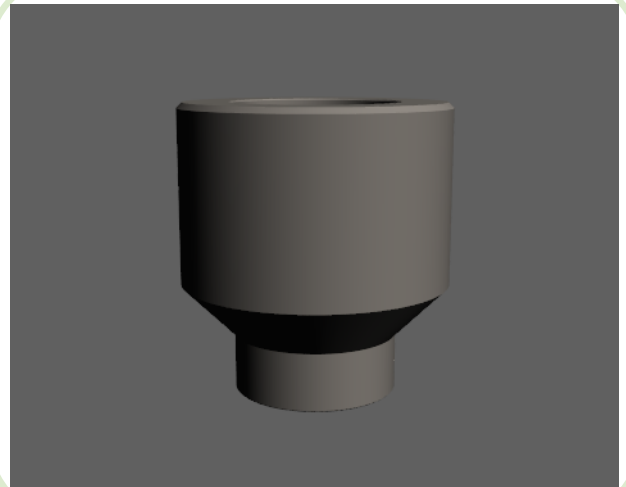
**Material:** Available in a complete range of Carbon Steels, Stainless Steels, Alloy Steels and Non-ferrous metals certified to ASTM, ASME, and Military standards.

**Sizes:** 1/2" - 2-1/2" in CL 3000 • 1/2" - 2" in CL 6000  
Also available in special pipe schedules/class rating, and special lengths

## Welding onto Header Pipe



Active  
3D  
Model



All dimensions are in inches • Weights are based on Carbon Steel

PIPE SIZE	Class 3000 – Figure No. 30166						
	1/2	3/4	1	1-1/4	1-1/2	2	2-1/2
A	1.312	1.500	1.813	2.188	2.500	3.125	3.625
B	1.688	1.875	2.188	2.375	2.500	2.875	3.000
C	0.855	1.065	1.330	1.675	1.915	2.405	2.920
D	0.438	0.563	0.563	0.563	0.563	0.688	0.688
E	0.938	1.062	1.312	1.688	1.938	2.438	2.875
LBS	0.34	0.43	0.72	1.08	1.48	2.54	3.41

PIPE SIZE	Class 6000 – Figure No. 60166						
	1/2	3/4	1	1-1/4	1-1/2	2	2-1/2
A	1.500	1.750	2.250	2.500	3.000	3.625	---
B	1.688	1.875	2.188	2.375	2.500	2.875	---
C	0.855	1.065	1.330	1.675	1.915	2.405	---
D	0.438	0.563	0.563	0.563	0.563	0.688	---
E	0.938	1.062	1.312	1.688	1.938	2.438	---
LBS	0.47	0.65	1.29	1.62	2.53	4.05	---