



Braze On Outlet

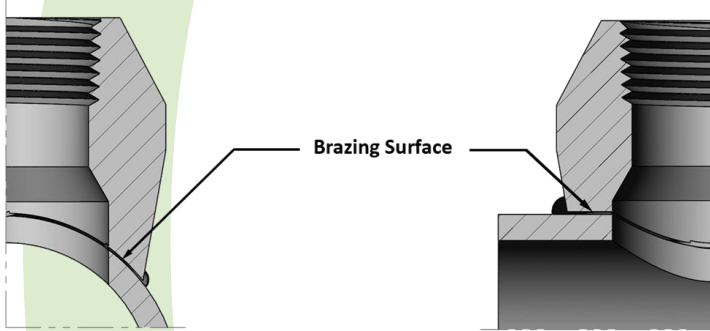
Specification: MIL-F-1183

Material: Available in all Bronze Alloys certified to ASTM, ASME and Military Standards

Sizes: 1/4" – 4" in all Pipe Schedules • 1/4" – 4" in Tube K, L, M

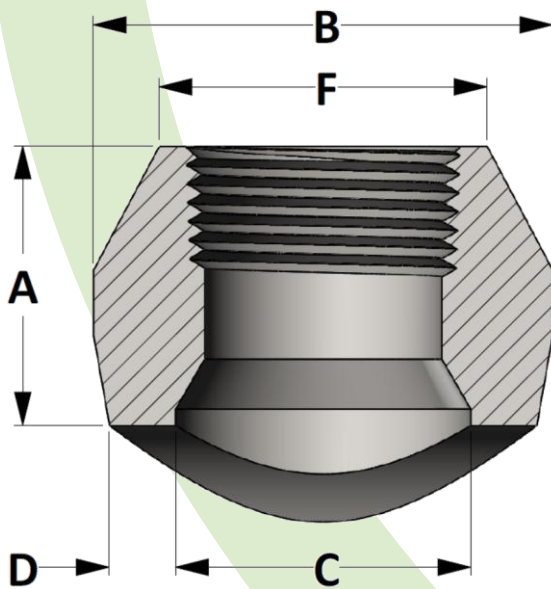
Available as Socket Weld or Threaded

Brazing onto Header Pipe

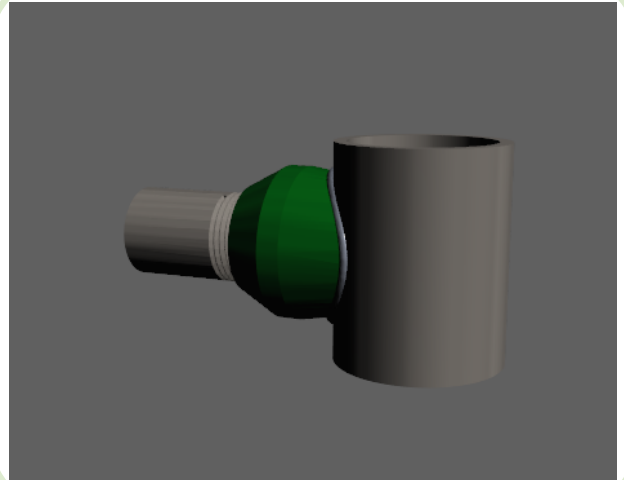


Transverse Section

Longitudinal Section



Active
3D
Model



All dimensions are in inches

PIPE SIZE	For Tubing Type K, L AND M										
	1/4	3/8	1/2	3/4	1	1-1/4	1-1/2	2	2-1/2	3	4
A	0.688	0.813	0.813	1.000	1.063	1.250	1.313	1.375	1.500	1.813	2.125
B	1.000	1.250	1.250	1.438	1.750	2.125	2.563	2.875	3.500	4.125	5.500
C	0.563	0.750	0.750	0.875	1.125	1.438	1.750	2.000	2.563	3.000	4.313
D	0.188	0.190	0.190	0.220	0.240	0.270	0.300	0.330	0.360	0.384	0.437
F	0.700	0.855	0.855	1.020	1.250	1.535	1.900	2.160	2.675	3.215	4.400

PIPE SIZE	For IPS Pipe										
	1/4	3/8	1/2	3/4	1	1-1/4	1-1/2	2	2-1/2	3	4
A	0.688	0.813	1.000	1.063	1.250	1.313	1.375	1.500	1.813	2.000	2.250
B	1.000	1.250	1.438	1.750	2.125	2.563	2.875	3.500	4.125	4.813	6.000
C	0.563	0.750	0.875	1.125	1.438	1.750	2.000	2.563	3.000	3.688	4.750
D	0.188	0.190	0.220	0.240	0.270	0.300	0.330	0.360	0.384	0.442	0.476
F	0.700	0.855	1.020	1.250	1.535	1.900	2.160	2.675	3.215	3.880	4.940