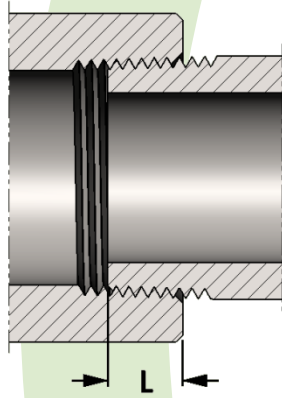


# Threaded Boss

ISO 9001 & PED Certified  
Canadian Registered in all provinces

Specification: ASME B16.11

**Material:** Available in a complete range of Carbon Steels, Stainless Steels, Alloy Steels and Non-ferrous metals certified to ASTM, ASME, and Military standards.



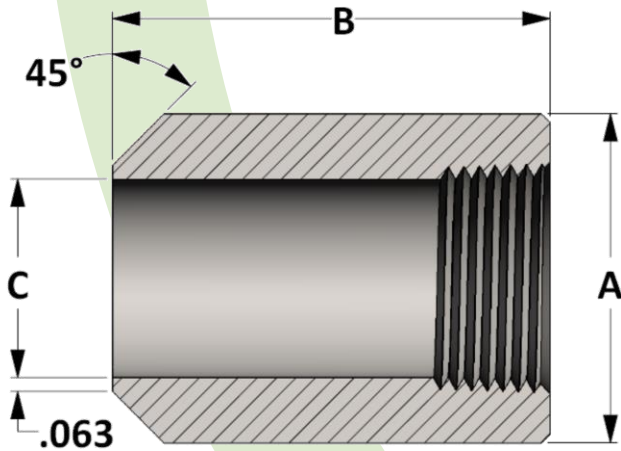
SIZE	L	SIZE	L
1/8	0.273	2	0.697
1/4	0.395	2-1/2	0.933
3/8	0.407	3	1.016
1/2	0.534	3-1/2	1.071
3/4	0.553	4	1.094
1	0.661	5	1.187
1-1/4	0.681	6	1.208
1-1/2	0.681	8	1.313

**Length of thread  
screwed into fitting**

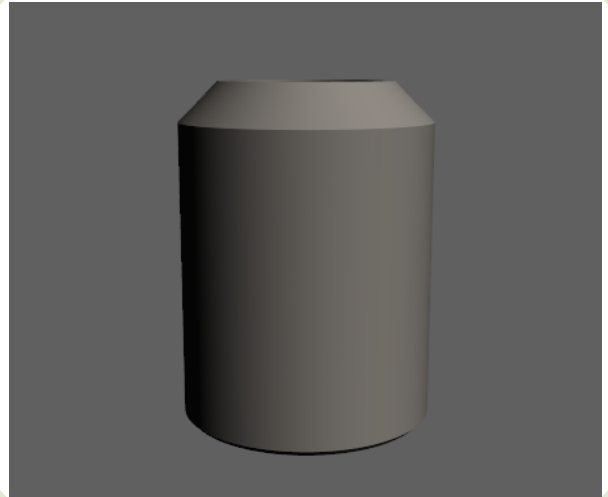
**Sizes:** 1/8" - 2" in CL 3000 and in CL 6000  
Also available in special lengths

**Threads:** American National Standard Taper Pipe Threads  
NPT (ANSI/ASME B1.20.1-1983)  
Also available in other thread forms: NPTF, NPSC, NPSM, NGT,  
SAE, BSPT, BSPP and in any combination.  
Left hand threads available upon request.

Threaded Pressure Class	Pipe Schedule
Class 3000	S160
Class 6000	XXH



Active  
**3D**  
Model



All dimensions are in inches • Weights are based on Carbon Steel

PIPE SIZE	CLASS 3000 – Figure No. 03022							
	1/4	3/8	1/2	3/4	1	1-1/4	1-1/2	2
A	0.750	0.875	1.125	1.375	1.750	2.250	2.500	3.000
B	0.690	0.750	0.940	1.000	1.190	1.310	1.560	1.690
C	0.438	0.563	0.703	0.906	1.141	1.468	1.688	2.188
LBS	0.06	0.08	0.16	0.23	0.43	0.75	1.06	1.44

PIPE SIZE	CLASS 6000 – Figure No. 06022							
	1/4	3/8	1/2	3/4	1	1-1/4	1-1/2	2
A	1.000	1.250	1.500	1.750	2.250	2.500	3.000	3.625
B	0.690	0.750	0.940	1.000	1.190	1.310	1.560	1.690
C	0.438	0.563	0.703	0.906	1.141	1.468	1.688	2.188
LBS	0.11	0.18	0.31	0.42	0.79	1.00	1.73	2.53