



Socket Weld Eccentric Reducer

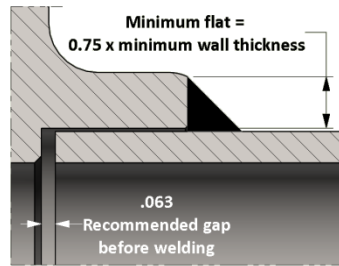
ISO 9001 & PED Certified
Canadian Registered in all provinces

Specification: ASME B16.11

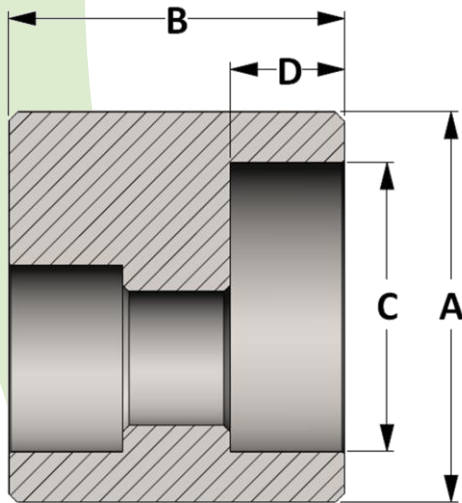
Material: Available in a complete range of Carbon Steels, Stainless Steels, Alloy Steels and Non-ferrous metals certified to ASTM, ASME, and Military standards.

Sizes: 1/4" - 12" in CL 3000 • 1/4" - 6" in CL 6000 • 1/4" - 4" in CL 9000
Also available in tube sizes, special pipe schedules/class rating, orifice holes, and special lengths

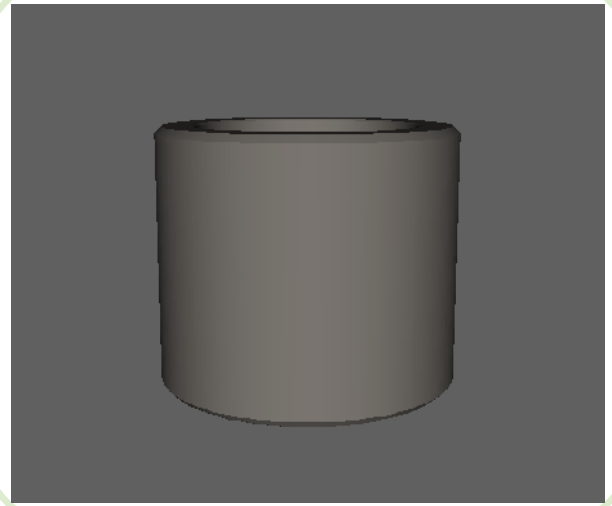
Welding Gap and Minimum Flat Dimension for Socket Weld Fittings



| Socket Weld Pressure Class | Pipe Schedule |
|----------------------------|---------------|
| Class 3000 | S80/XH |
| Class 6000 | S160 |
| Class 9000 | XXH |



Active
3D
Model



All dimensions are in inches • Weights are based on Carbon Steel
Waterway of reducer is determined by schedule of small end

| PIPE SIZE | CLASS 3000 – Figure No. 13024 | | | | | | | | | | | | |
|-----------|-------------------------------|-------|-------|-------|-------|-------|-------|-------|-------|-------|-------|-------|-------|
| | 1/8 | 1/4 | 3/8 | 1/2 | 3/4 | 1 | 1-1/4 | 1-1/2 | 2 | 2-1/2 | 3 | 3-1/2 | 4 |
| A | --- | 0.875 | 1.063 | 1.250 | 1.500 | 1.813 | 2.250 | 2.500 | 3.000 | 3.625 | 4.313 | 5.000 | 5.500 |
| B | --- | 1.125 | 1.125 | 1.250 | 1.438 | 1.563 | 1.563 | 1.563 | 2.063 | 2.063 | 2.063 | 2.313 | 2.313 |
| C | --- | 0.560 | 0.693 | 0.859 | 1.071 | 1.335 | 1.682 | 1.922 | 2.410 | 2.910 | 3.536 | 4.036 | 4.545 |
| D | --- | 0.438 | 0.438 | 0.438 | 0.531 | 0.531 | 0.531 | 0.531 | 0.656 | 0.656 | 0.656 | 0.781 | 0.781 |
| LBS | --- | 0.14 | 0.21 | 0.33 | 0.55 | 0.89 | 1.39 | 1.70 | 3.09 | 4.60 | 6.51 | 9.79 | 11.72 |

| PIPE SIZE | CLASS 6000 – Figure No. 16024 | | | | | | | | | | | | |
|-----------|-------------------------------|-------|-------|-------|-------|-------|-------|-------|-------|-------|-------|-------|-------|
| | 1/8 | 1/4 | 3/8 | 1/2 | 3/4 | 1 | 1-1/4 | 1-1/2 | 2 | 2-1/2 | 3 | 3-1/2 | 4 |
| A | --- | 1.000 | 1.250 | 1.500 | 1.750 | 2.000 | 2.500 | 2.750 | 3.625 | 4.250 | 5.000 | 6.000 | 6.000 |
| B | --- | 1.125 | 1.125 | 1.250 | 1.438 | 1.563 | 1.563 | 1.563 | 2.063 | 2.063 | 2.063 | 2.313 | 2.313 |
| C | --- | 0.560 | 0.693 | 0.859 | 1.071 | 1.335 | 1.682 | 1.922 | 2.410 | 2.910 | 3.536 | 4.036 | 4.545 |
| D | --- | 0.438 | 0.438 | 0.438 | 0.531 | 0.531 | 0.531 | 0.531 | 0.656 | 0.656 | 0.656 | 0.781 | 0.781 |
| LBS | --- | 0.20 | 0.32 | 0.53 | 0.82 | 1.15 | 1.81 | 2.16 | 5.13 | 6.99 | 9.57 | 15.58 | 14.82 |

| PIPE SIZE | CLASS 9000 – Figure No. 19024 | | | | | | | | | | | | |
|-----------|-------------------------------|-------|-------|-------|-------|-------|-------|-------|-------|-------|-------|-------|-------|
| | 1/8 | 1/4 | 3/8 | 1/2 | 3/4 | 1 | 1-1/4 | 1-1/2 | 2 | 2-1/2 | 3 | 3-1/2 | 4 |
| A | --- | 1.250 | 1.500 | 1.750 | 2.000 | 2.500 | 2.750 | 3.000 | 3.625 | 4.500 | 5.500 | 6.000 | 6.500 |
| B | --- | 1.125 | 1.125 | 1.250 | 1.438 | 1.563 | 1.563 | 1.563 | 2.063 | 2.063 | 2.063 | 2.313 | 2.313 |
| C | --- | 0.560 | 0.693 | 0.859 | 1.071 | 1.335 | 1.682 | 1.922 | 2.410 | 2.910 | 3.536 | 4.036 | 4.545 |
| D | --- | 0.438 | 0.438 | 0.438 | 0.531 | 0.531 | 0.531 | 0.531 | 0.656 | 0.656 | 0.656 | 0.781 | 0.781 |
| LBS | --- | 0.34 | 0.55 | 0.76 | 1.12 | 1.93 | 2.26 | 2.65 | 5.02 | 7.90 | 11.88 | 15.48 | 17.92 |