



# Socket Weld 45° Elbow

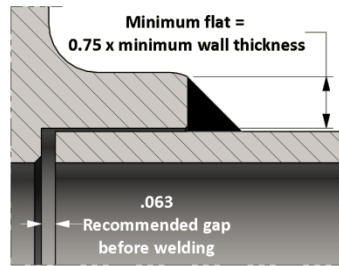
ISO 9001 & PED Certified  
Canadian Registered in all provinces

Specification: ASME B16.11

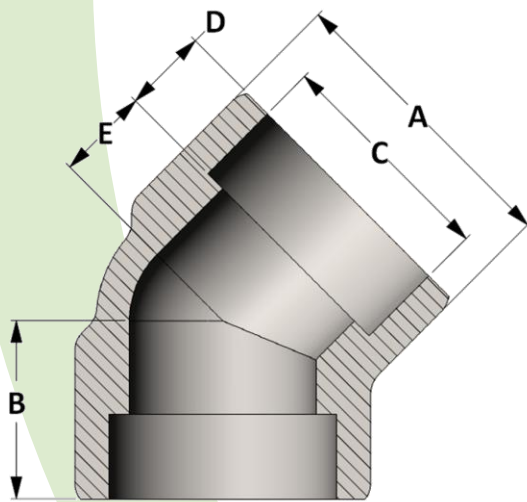
**Material:** Available in a complete range of Carbon Steels, Stainless Steels, Alloy Steels and Non-ferrous metals certified to ASTM, ASME, and Military standards.

**Sizes:** 1/8" - 4" in Class 3000 & 6000 • 1/8" - 3-1/2" in Class 9000  
Also available in CL 10,000 and in reducing pipe sizes and tube sizes

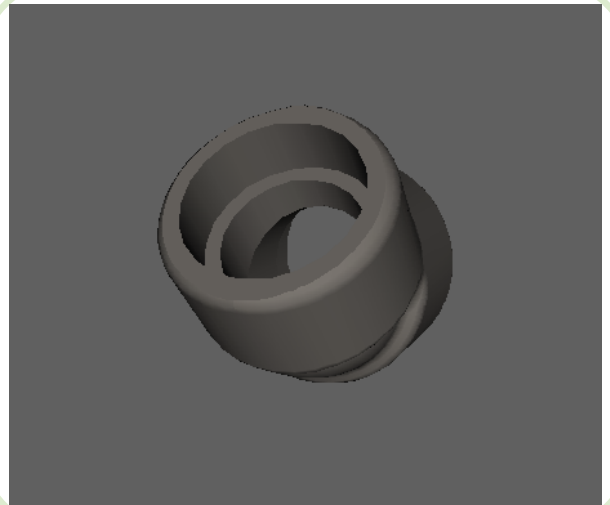
## Welding Gap and Minimum Flat Dimension for Socket Weld Fittings



Socket Weld Pressure Class	Pipe Schedule
Class 3000	S80/XH
Class 6000	S160
Class 9000	XXH



Active  
**3D**  
Model



All dimensions are in inches • Weights are based on Carbon Steel

CLASS 3000 – Figure No. 13003

PIPE SIZE	1/8	1/4	3/8	1/2	3/4	1	1-1/4	1-1/2	2	2-1/2	3	4
A	1.063	1.063	1.063	1.313	1.500	1.813	2.188	2.500	3.000	4.000	4.750	5.875
B	0.750	0.750	0.750	0.875	1.000	1.125	1.313	1.375	1.688	2.063	2.500	3.125
C	0.426	0.560	0.693	0.859	1.071	1.335	1.682	1.922	2.410	2.910	3.536	4.545
D	0.438	0.438	0.438	0.438	0.500	0.563	0.625	0.563	0.688	0.938	1.250	1.500
E	0.313	0.313	0.313	0.438	0.500	0.563	0.688	0.813	1.000	1.125	1.250	1.625
LBS	0.26	0.24	0.18	0.40	0.55	0.89	1.23	1.76	3.02	7.62	12.49	19.34

CLASS 6000 – Figure No. 16003

PIPE SIZE	1/8	1/4	3/8	1/2	3/4	1	1-1/4	1-1/2	2	2-1/2	3	4
A	1.063	1.063	1.313	1.500	1.813	2.188	2.500	3.000	3.313	4.000	4.750	5.875
B	0.750	0.750	0.875	1.000	1.125	1.313	1.375	1.688	1.781	2.063	2.500	3.125
C	0.426	0.560	0.693	0.859	1.071	1.335	1.682	1.922	2.410	2.910	3.536	4.545
D	0.438	0.438	0.438	0.500	0.563	0.625	0.563	0.688	0.656	0.813	1.125	1.500
E	0.313	0.313	0.438	0.500	0.563	0.688	0.813	1.000	1.125	1.250	1.375	1.625
LBS	0.25	0.24	0.48	0.74	1.25	2.03	2.17	4.60	5.11	8.37	12.02	21.76

CLASS 9000 – Figure No. 19003

PIPE SIZE	1/8	1/4	3/8	1/2	3/4	1	1-1/4	1-1/2	2	2-1/2	3	4
A	1.063	1.313	1.500	1.813	2.188	2.500	3.000	3.313	4.000	4.750	5.875	---
B	0.750	0.875	1.000	1.125	1.313	1.375	1.688	1.781	2.063	2.500	3.125	---
C	0.426	0.560	0.693	0.859	1.071	1.335	1.682	1.922	2.410	2.910	3.536	---
D	0.438	0.500	0.500	0.500	0.563	0.563	0.813	0.781	0.938	1.000	1.250	---
E	0.313	0.375	0.563	0.625	0.750	0.813	0.875	1.000	1.125	1.500	1.875	---
LBS	0.33	0.56	0.85	1.41	2.28	3.04	5.23	6.51	10.44	18.75	32.85	---