



# Pipe Nipple

**Specification:** ASTM A733

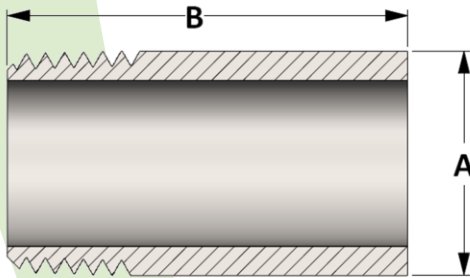
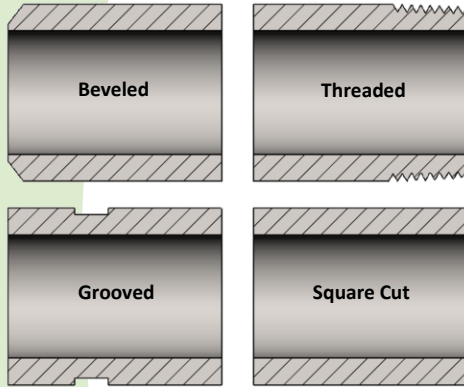
Threaded ends per ASME B1.20.1 • Beveled ends per ASME B16.25

**Material:** Available in a complete range of Carbon Steels, Stainless Steels, Alloy Steels and Non-ferrous metals certified to ASTM, ASME, and Military standards.

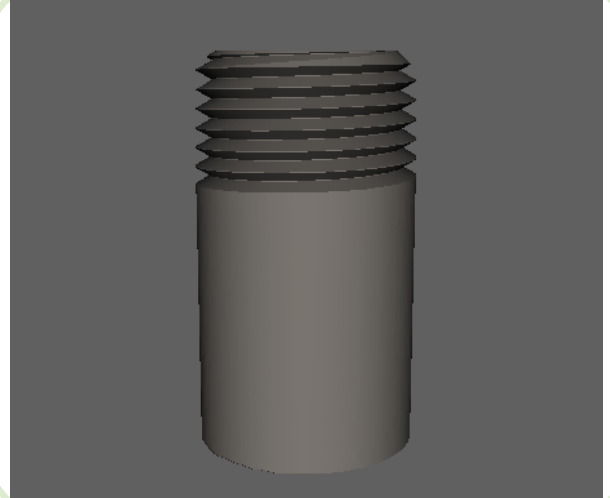
**Sizes:** 1/4" - 8" in S40/STD, S80/XH, S160 & XXH

Also available in special pipe schedules and custom lengths. Lengths which are shorter than Close length are not recommended for pressure application.

## End Preparations



Active  
3D  
Model



All dimensions are in inches • Weights are based on Carbon Steel

Pipe Size	A	B										
		Close	Short	Standard Lengths								
1/8	0.405	0.750	1.500	2.000	2.500	3.000	3.500	4.000	4.500	5.000	5.500	6.000
1/4	0.540	0.875	1.500	2.000	2.500	3.000	3.500	4.000	4.500	5.000	5.500	6.000
3/8	0.675	1.000	1.500	2.000	2.500	3.000	3.500	4.000	4.500	5.000	5.500	6.000
1/2	0.840	1.125	1.500	2.000	2.500	3.000	3.500	4.000	4.500	5.000	5.500	6.000
3/4	1.050	1.375	1.500	2.000	2.500	3.000	3.500	4.000	4.500	5.000	5.500	6.000
1	1.315	1.500	2.000	---	2.500	3.000	3.500	4.000	4.500	5.000	5.500	6.000
1-1/4	1.660	1.625	2.000	---	2.500	3.000	3.500	4.000	4.500	5.000	5.500	6.000
1-1/2	1.900	1.750	2.000	---	2.500	3.000	3.500	4.000	4.500	5.000	5.500	6.000
2	2.375	2.000	2.500	---	---	3.000	3.500	4.000	4.500	5.000	5.500	6.000
2-1/2	2.875	2.500	3.000	---	---	---	---	4.000	4.500	5.000	5.500	6.000
3	3.500	2.625	3.000	---	---	---	---	4.000	4.500	5.000	5.500	6.000
3-1/2	4.000	2.750	4.000	---	---	---	---	---	4.500	5.000	5.500	6.000
4	4.500	2.875	4.000	---	---	---	---	---	4.500	5.000	5.500	6.000
5	5.563	3.000	4.500	---	---	---	---	---	---	5.000	5.500	6.000
6	6.625	3.125	4.500	---	---	---	---	---	---	5.000	5.500	6.000