

Lateral Outlet

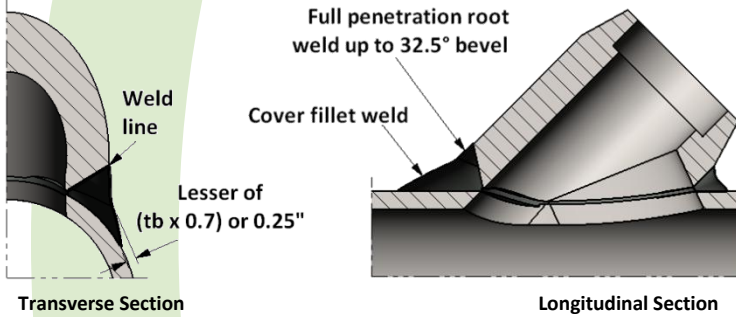
Specification: MSS – SP97 & ASME B31.1

Also in ASME B31.3, ASME B31.8, and ASME BPVC Sec I & Sec VIII Div 2
Threaded ends per ASME B1.20.1 • Beveled ends per ASME B16.25
Socket Weld ends per B16.11

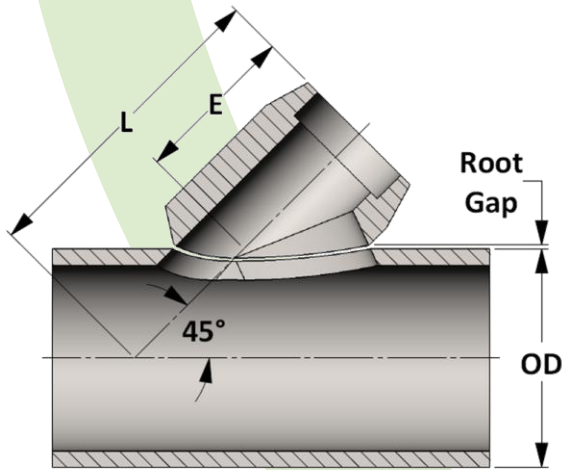
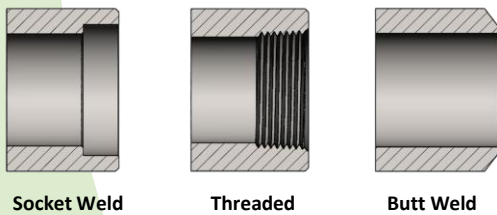
Material: Available in a complete range of Carbon Steels, Stainless Steels, Alloy Steels and Non-ferrous metals certified to ASTM, ASME, and Military standards.

Sizes: 1/4" – 36" in all Schedules • 1/4" – 4" in Class 3000 & Class 6000
Also available in other requirements such as pressure and temperature specifics and special header, branch wall thickness.
60° lateral outlets as well as other special angles are available upon request

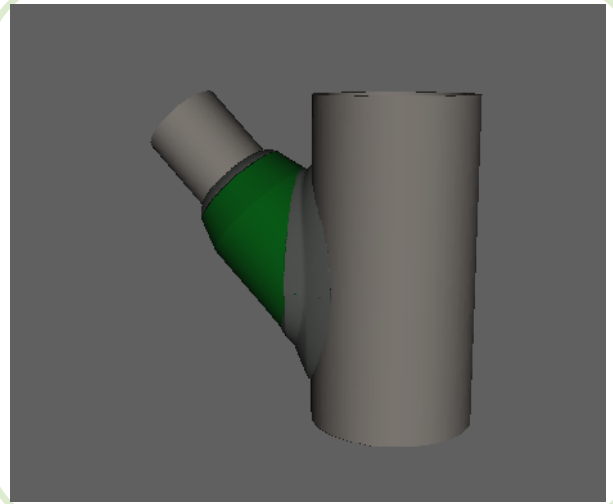
Welding onto Header Pipe



End Preparations



Active
3D
Model



Equation for center to face

$$L = E + 1.414(OD/2 + \text{Root Gap})$$

All dimensions are in inches • Weights are based on Carbon Steel

PIPE SIZE	STD / S40		XH / S80		Class 3000		Class 6000	
	E	LBS	E	LBS	E	LBS	E	LBS
1/4	1.625	0.21	1.625	0.25	1.593	0.23	1.813	0.54
3/8	1.625	0.29	1.625	0.31	1.625	0.37	1.813	0.82
1/2	1.625	0.40	1.625	0.45	1.625	0.45	2.125	1.00
3/4	1.875	0.75	1.875	0.90	1.875	0.70	2.438	1.40
1	2.250	1.25	2.250	1.40	2.250	1.35	2.781	2.55
1-1/4	2.500	1.84	2.500	1.99	2.500	2.00	3.000	3.40
1-1/2	2.688	2.05	2.688	2.25	2.688	2.60	3.313	5.55
2	3.125	3.60	3.125	3.95	3.125	4.85	4.063	9.38
2-1/2	3.438	4.36	3.438	4.92	3.438	5.50	5.125	17.99
3	3.906	6.50	3.906	7.46	4.375	10.60	---	---
4	4.750	13.50	4.750	13.91	5.125	16.34	---	---
6	6.375	32.52	7.063	40.60	---	---	---	---
8	7.750	53.38	9.125	88.04	---	---	---	---
10	9.188	99.00	10.500	157.41	---	---	---	---
12	10.875	167.37	12.063	261.47	---	---	---	---