

# Eccentric Swage Nipple

ISO 9001:2008 & PED Certified  
Canadian Registered in all provinces

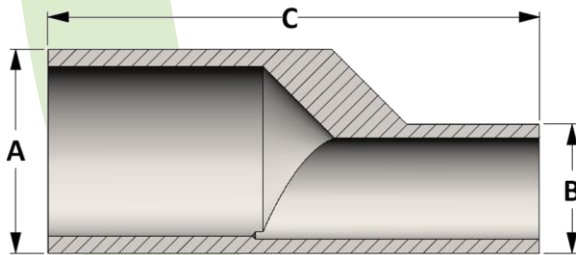
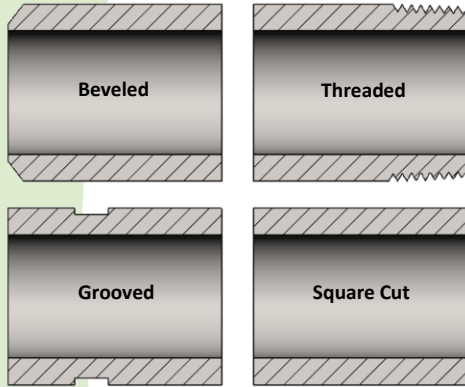
**Specification:** MSS SP-95

Threaded ends per ASME B1.20.1 • Beveled ends per ASME B16.25

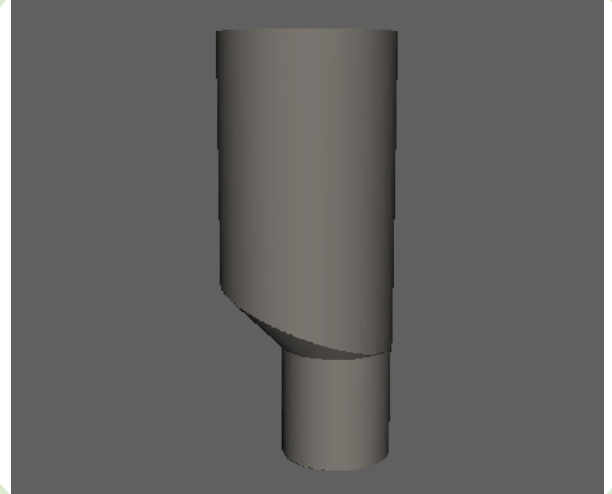
**Material:** Available in a complete range of Carbon Steels, Stainless Steels, Alloy Steels and Non-ferrous metals certified to ASTM, ASME, and Military standards.

**Sizes:** 1/4" - 8" in S40/STD, S80/XH, S160 & XXH  
Also available in special pipe schedules and split schedules

## End Preparations



Active  
**3D**  
Model



All dimensions are in inches • Weights are based on Carbon Steel

Pipe Size	Dimensions			Weights				
	A	B	C	STD	XH	S160	XXH	
1/4	1/8	0.540	0.405	2.250	0.08	0.10	0.11	---
3/8	1/8	0.675	0.405	2.500	0.13	0.15	0.18	---
	1/4	0.675	0.540	2.500	0.13	0.16	0.19	0.22
1/2	1/8	0.840	0.405	2.750	0.21	0.25	0.28	---
	1/4	0.840	0.540	2.750	0.21	0.25	0.28	0.35
3/4	3/8	0.840	0.675	2.750	0.20	0.24	0.29	0.36
	1/8	1.050	0.405	3.000	0.32	0.37	0.44	---
	1/4	1.050	0.540	3.000	0.31	0.37	0.44	---
	3/8	1.050	0.675	3.000	0.30	0.36	0.45	0.54
1	1/2	1.050	0.840	3.000	0.29	0.37	0.45	0.57
	1/8	1.315	0.405	3.500	0.61	0.69	0.80	---
	1/4	1.315	0.540	3.500	0.59	0.68	0.79	---
	3/8	1.315	0.675	3.500	0.56	0.67	0.78	0.93
1-1/4	1/2	1.315	0.840	3.500	0.54	0.64	0.77	0.95
	3/4	1.315	1.050	3.500	0.48	0.60	0.76	0.94
	1/8	1.660	0.405	4.000	0.97	1.11	1.25	---
	1/4	1.660	0.540	4.000	0.95	1.09	1.24	---
1-1/2	3/8	1.660	0.675	4.000	0.91	1.06	1.23	1.51
	1/2	1.660	0.840	4.000	0.88	1.04	1.21	1.52
	3/4	1.660	1.050	4.000	0.83	1.00	1.21	1.53
	1	1.660	1.315	4.000	0.80	1.00	1.24	1.61
1-1/2	1/8	1.900	0.405	4.500	1.38	1.57	---	---
	1/4	1.900	0.540	4.500	1.34	1.55	1.81	---
	3/8	1.900	0.675	4.500	1.30	1.51	1.79	2.13
	1/2	1.900	0.840	4.500	1.25	1.48	1.76	2.13
	3/4	1.900	1.050	4.500	1.18	1.42	1.74	2.13
	1	1.900	1.315	4.500	1.13	1.39	1.75	2.19
1-1/4	1.900	1.660	4.500	1.05	1.36	1.72	2.19	

Pipe Size	Dimensions			Weights				
	A	B	C	STD	XH	S160	XXH	
2	1/2	2.375	0.840	6.500	2.55	3.06	3.90	4.51
	3/4	2.375	1.050	6.500	2.43	2.98	3.85	4.48
	1	2.375	1.315	6.500	2.33	2.88	3.81	4.50
	1-1/4	2.375	1.660	6.500	2.18	2.77	3.71	4.53
2-1/2	1-1/2	2.375	1.900	6.500	2.09	2.73	3.76	4.61
	3/4	2.875	1.050	7.000	3.45	4.23	5.22	6.71
	1	2.875	1.315	7.000	3.32	4.13	5.16	6.71
	1-1/4	2.875	1.660	7.000	3.16	4.01	5.04	6.70
3	1-1/2	2.875	1.900	7.000	3.09	3.96	5.09	6.76
	2	2.875	2.375	7.000	3.02	3.99	5.38	7.03
	1	3.500	1.315	8.000	6.01	7.20	8.98	10.86
	1-1/4	3.500	1.660	8.000	5.65	6.88	8.66	10.72
3-1/2	1-1/2	3.500	1.900	8.000	5.41	6.70	8.59	10.65
	2	3.500	2.375	8.000	5.03	6.42	8.64	10.67
	2-1/2	3.500	2.875	8.000	5.07	6.60	8.77	11.43
	1-1/2	4.000	1.900	8.000	7.23	8.82	---	13.65
4	2	4.000	2.375	8.000	6.63	8.32	---	13.39
	2-1/2	4.000	2.875	8.000	6.43	8.24	---	13.84
	3	4.000	3.500	8.000	6.10	8.14	---	14.39
	1-1/2	4.500	1.900	9.000	9.76	11.79	15.25	17.83
6	2	4.500	2.375	9.000	8.98	11.13	14.96	17.50
	2-1/2	4.500	2.875	9.000	8.69	10.98	14.71	18.00
	3	4.500	3.500	9.000	8.19	10.75	15.05	18.52
	3-1/2	4.500	4.000	9.000	8.00	10.83	---	19.35
6	3	6.625	3.500	12.00	27.91	34.08	44.58	50.69
	3-1/2	6.625	4.000	12.00	25.94	32.39	---	49.77
	4	6.625	4.500	12.00	24.16	30.93	42.90	49.26
5	6.625	5.563	12.00	20.96	28.63	42.87	49.45	