



# Countersunk Head Plug

ISO 9001 & PED Certified  
Canadian Registered in all provinces

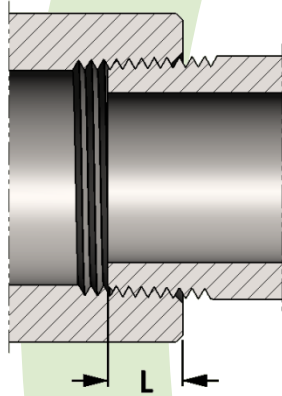
**Specification:** ASME B16.14 for 1/8" - 4" only

**Material:** Available in a complete range of Carbon Steels, Stainless Steels, Alloy Steels and Non-ferrous metals certified to ASTM, ASME, and Military standards.

**Sizes:** 1/8" - 8"

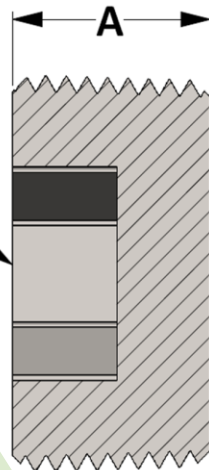
**Threads:** American National Standard Taper Pipe Threads  
NPT (ANSI/ASME B1.20.1-1983)

Also available in other thread forms: NPTF, NPSC, NPSM, BSPT, BSPP



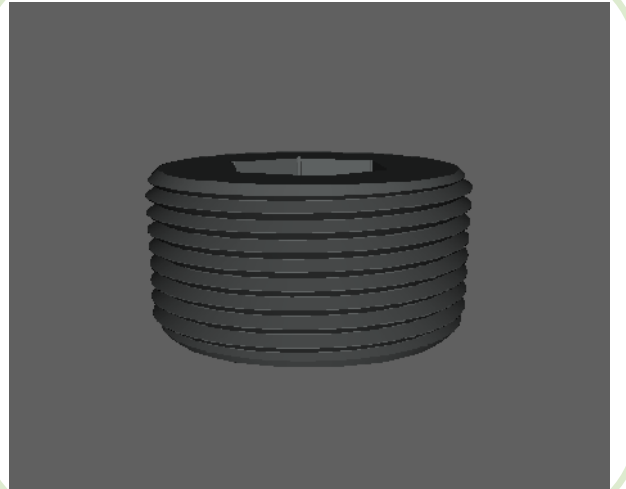
SIZE	L	SIZE	L
1/8	0.273	2	0.697
1/4	0.395	2-1/2	0.933
3/8	0.407	3	1.016
1/2	0.534	3-1/2	1.071
3/4	0.553	4	1.094
1	0.661	5	1.187
1-1/4	0.681	6	1.208
1-1/2	0.681	8	1.313

**Length of thread  
screwed into fitting**



Countersunk available  
as Hexagon or Square

Active  
**3D**  
Model



All dimensions are in inches • Weights are based in Carbon Steel

PIPE SIZE	Figure No. 06019 for Square Countersunk • Figure No. 06020 for Hexagon Countersunk													
	1/8	1/4	3/8	1/2	3/4	1	1-1/4	1-1/2	2	2-1/2	3	3-1/2	4	6
A	0.375	0.440	0.500	0.562	0.630	0.750	0.812	0.830	0.880	1.070	1.130	1.187	1.250	1.500
LBS	0.01	0.02	0.03	0.06	0.10	0.48	0.38	0.46	0.84	1.63	2.40	4.11	5.07	13.81