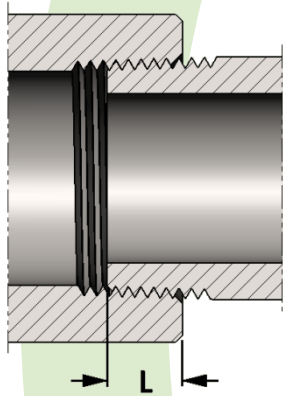


Combination Boss

Material: Available in a complete range of Carbon Steels, Stainless Steels, Alloy Steels and Non-ferrous metals certified to ASTM, ASME, and Military standards.

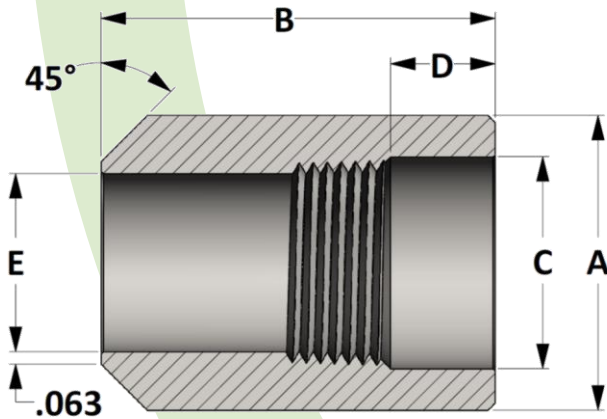
Sizes: 1/8" - 2" in CL 3000 and CL 6000 • 1/2" - 2" in CL 9000
Also available in special pipe schedules/class rating, and special lengths

Threads: American National Standard Taper Pipe Threads
NPT (ANSI/ASME B1.20.1-1983)
Also available in other thread forms: NPTF, NPSC, NPSM, NGT,
Left hand threads available upon request.

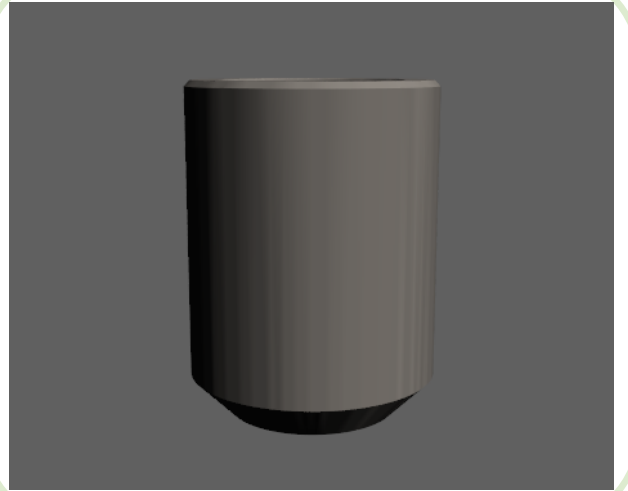


SIZE	L	SIZE	L
1/8	0.273	2	0.697
1/4	0.395	2-1/2	0.933
3/8	0.407	3	1.016
1/2	0.534	3-1/2	1.071
3/4	0.553	4	1.094
1	0.661	5	1.187
1-1/4	0.681	6	1.208
1-1/2	0.681	8	1.313

**Length of thread
screwed into fitting**



Active
3D
Model



All dimensions are in inches • Weights are based on Carbon Steel

PIP SIZE	CLASS 3000 – Figure No. 30131							
	1/4	3/8	1/2	3/4	1	1-1/4	1-1/2	2
A	0.875	1.063	1.250	1.500	1.813	2.250	2.500	3.000
B	1.625	1.750	2.000	2.000	2.000	2.000	2.000	2.000
C	0.560	0.693	0.859	1.071	1.335	1.682	1.922	2.410
D	0.438	0.438	0.438	0.531	0.531	0.531	0.531	0.656
E	0.438	0.563	0.703	0.906	1.141	1.468	1.688	2.188
LBS	0.20	0.25	0.45	0.60	0.80	1.10	1.35	1.60

PIPE SIZE	CLASS 6000 – Figure No. 60131							
	1/4	3/8	1/2	3/4	1	1-1/4	1-1/2	2
A	1.000	1.250	1.500	1.750	2.000	2.500	2.750	3.625
B	1.625	1.750	2.000	2.000	2.000	2.000	2.000	2.000
C	0.560	0.693	0.859	1.071	1.335	1.682	1.922	2.410
D	0.438	0.438	0.438	0.531	0.531	0.531	0.531	0.656
E	0.438	0.563	0.703	0.906	1.141	1.468	1.688	2.188
LBS	0.27	0.45	0.72	0.91	1.41	1.58	2.17	2.76

PIPE SIZE	CLASS 9000 – Figure No. 90131							
	1/4	3/8	1/2	3/4	1	1-1/4	1-1/2	2
A	---	---	1.750	2.000	2.500	2.750	3.000	3.625
B	---	---	2.000	2.000	2.000	2.000	2.000	2.250
C	---	---	0.859	1.071	1.335	1.682	1.922	2.410
D	---	---	0.438	0.531	0.531	0.531	0.531	0.656
E	---	---	0.703	0.906	1.141	1.468	1.688	2.188
LBS	---	---	0.99	1.43	1.66	2.19	2.83	4.19